



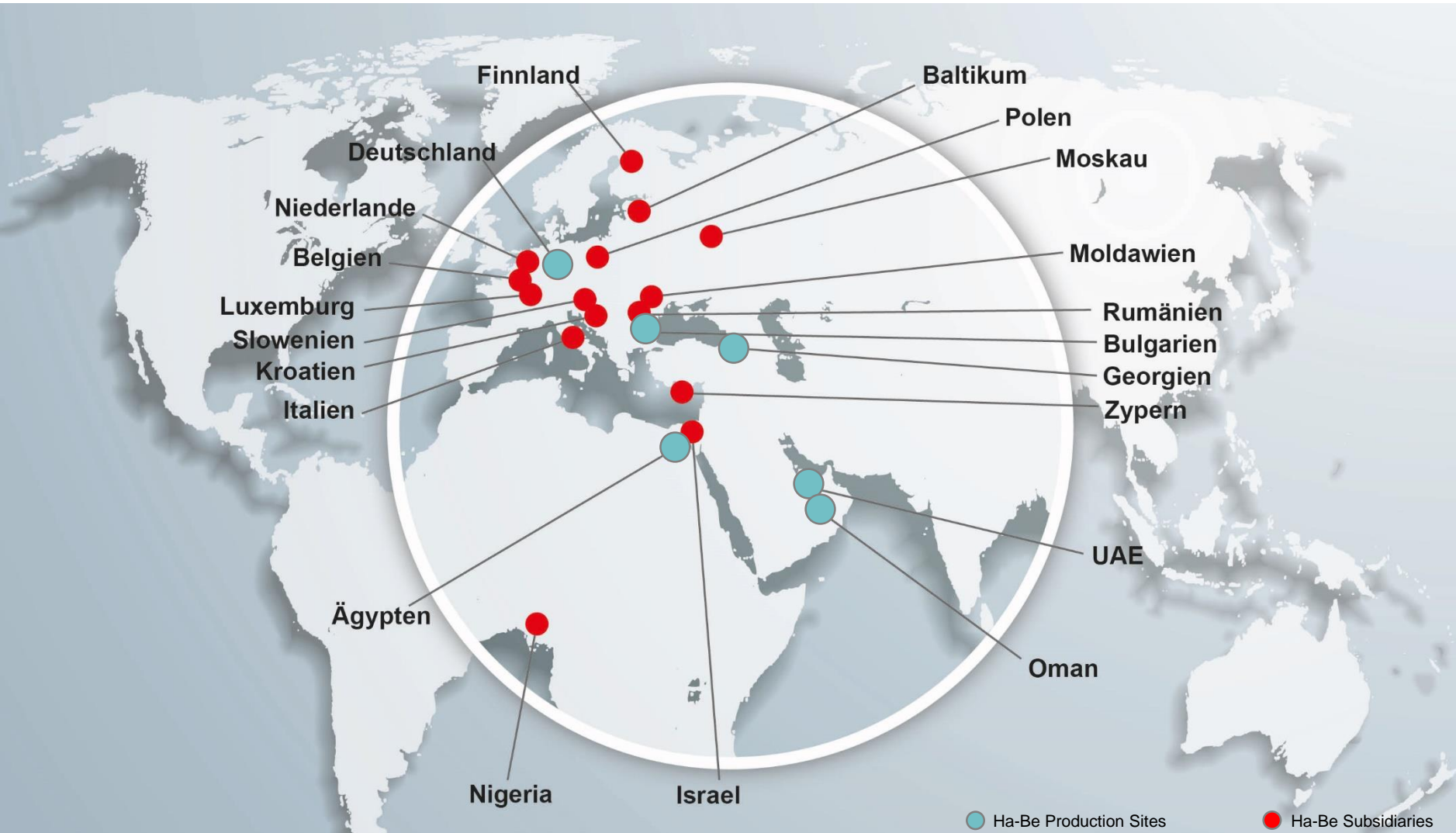
# HA-BE PRESENTATION

Company Presentation

# 1. General Company Profile



# 1.1 International Positioning



## 1.2 Commitment to Sustainability

### SUSTAINABLE DEVELOPMENT

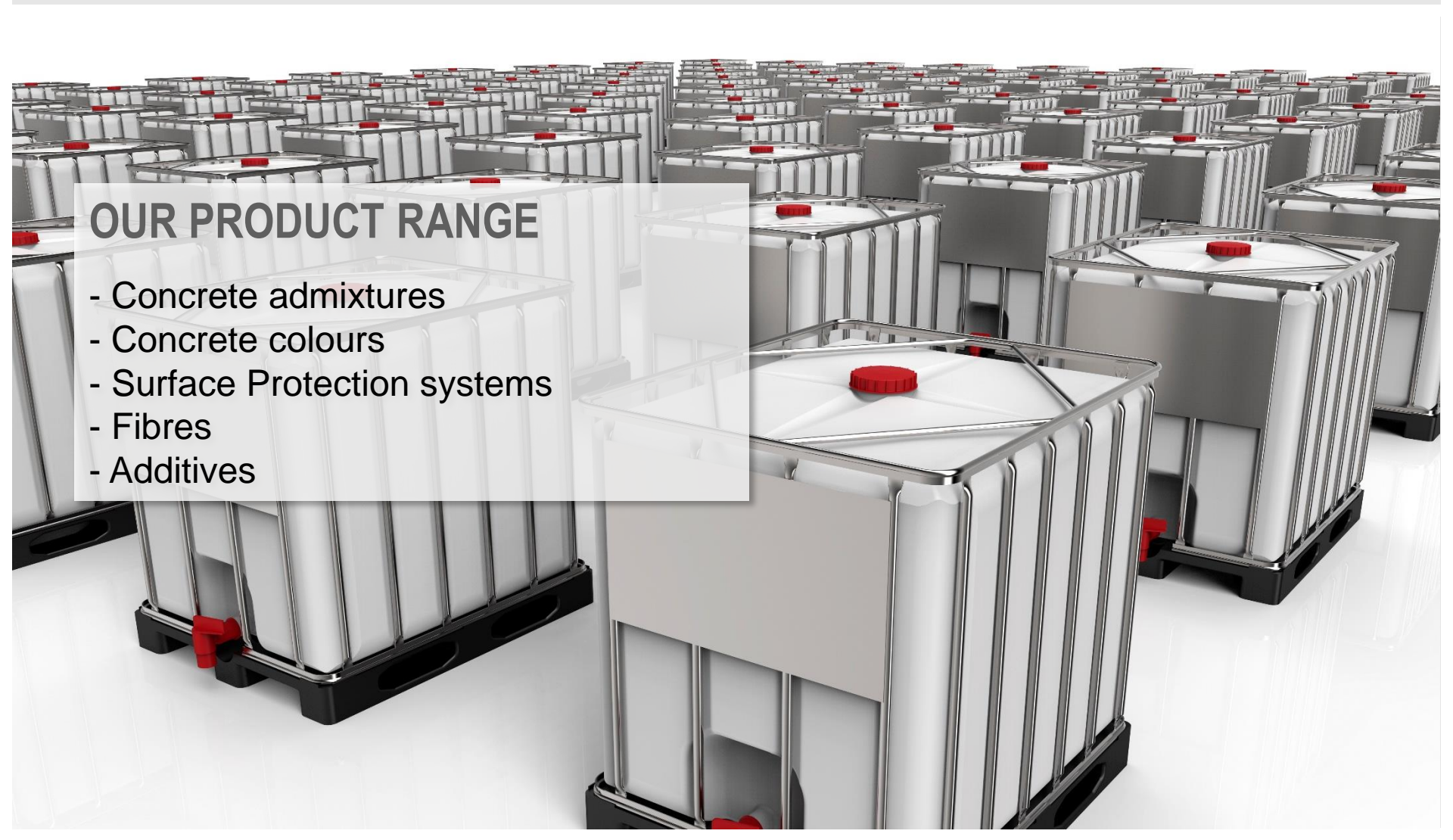
- Admixtures which allow ecological and economical production of concrete
- Lower energy
- Reduces fresh water
- Increase of durability
- Enables utilization of recycled material



## 2. Product Portfolio

### OUR PRODUCT RANGE

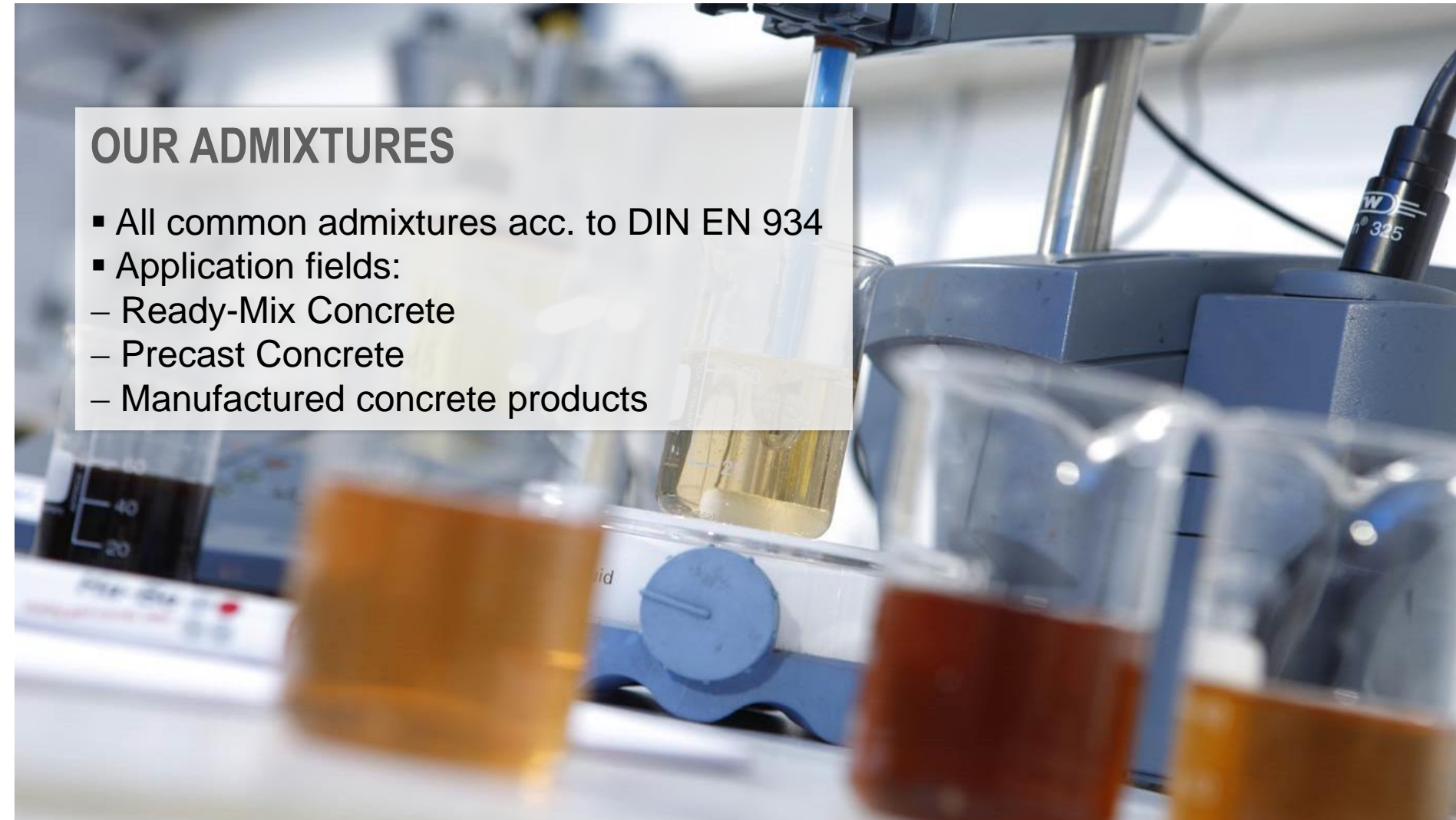
- Concrete admixtures
- Concrete colours
- Surface Protection systems
- Fibres
- Additives



## 2.1 Concrete Admixtures

### OUR ADMIXTURES

- All common admixtures acc. to DIN EN 934
- Application fields:
  - Ready-Mix Concrete
  - Precast Concrete
  - Manufactured concrete products



# 2.1 Concrete Admixtures

## Certification factory production control & KOMO Certification



**kiwa**  
Partner for progress

**KOMO® productcertificaat**  
nummer : 1516-14-2 uitgegeven : 1 februari 2016  
versnft : 1516-14-5 geldig tot : Onbepaald  
d.d. 1 januari 2015

**HULPSTOFFEN VOOR BETON, MORTEL OF INJECTIEMORTEL**  
Categorie: superplastificeerders

De ge certificeerde producten behoren bij het certificaat worden paginas in de tabel op pagina 2.

Certificaathouder :  
Ha-Be Betonchemie GmbH & Co. KG

**Verklaring van Kiwa:**  
Dit productcertificaat is op basis van BRL 1803 "hulpstoffen voor beton, mortel of injectiemortel" d.d. 24 jul 2013 inclusief wijzigingsblad d.d. 31 december 2014, afgegeven conform het Kiwa Reglement voor Productcertificaten.

Het kwaliteitssysteem en de productkenmerken behorende bij hulpstoffen worden periodiek gecontroleerd.

Op basis daarvan verklaart Kiwa dat het gerechtvaardigd vertrouwen bestaat, dat de door de certificaathouder geleverde hulpstoffen bij aflevering voldoen aan de in dit productcertificaat vastgelegde technische specificatie, mits de hulpstoffen voorzien zijn van het KOMO®-merk op een wijze als aangegeven in dit productcertificaat.

De essentiële kenmerken, zoals vastgelegd in de van toepassing zijnde Europese norm, maken geen onderdeel uit van deze verklaring.

*[Signature]*  
Lutz Leroy  
Kiwa

Dit productcertificaat is opgenomen in het overzicht op de website van Stichting KOMO [www.komo.nl](http://www.komo.nl)  
Adres: [www.komo.nl](http://www.komo.nl) om te zien of dit productcertificaat geldig is.

Bedrijf:  
Ha-Be Betonchemie GmbH & Co. KG  
Stüvestraße 39  
D-31785 Hameln  
Duitsland

pagina : 1 van 2

Kiwa Nederland B.V.  
De Wierden 23  
2082 EA Rijswijk  
Postbus 70, 2080 AB Rijswijk  
T +31(0) 88 586 44 40  
E [info@kiwa.nl](mailto:info@kiwa.nl)  
W [www.kiwa.nl](http://www.kiwa.nl)

**KOMO**  
Bevoegdheid in:  
Kwaliteitsysteem  
product  
Periodieke controle



**Q D B**  
QUALITÄTSGEMEINSCHAFT DEUTSCHE BAUCHEMIE e.V.  
Kompetenz. Zuverlässigkeit. Qualität.

**CERTIFICATE**  
of conformity of the factory production control  
No. 0921 – CPR – 2002

In compliance with Regulation 305/2011/EU of the European Parliament and of the Council of 9 March 2011 (the Construction Products Regulation – CPR), this certificate applies to the construction products admixture types according to EN 934:

• Water reducing/plasticizing admixtures	EN 934-2:T2
• High range water reducing/superplasticizing admixtures	EN 934-2:T3.1/3.2
• Water retaining admixtures	EN 934-2:T4
• Air entraining admixtures	EN 934-2:T5
• Hardening accelerating admixtures	EN 934-2:T7
• Set retarding admixtures	EN 934-2:T8
• Water resisting admixtures	EN 934-2:T9
• Viscosity modifying admixtures	EN 934-2:T13

intended for use in the preparation of concrete and/or mortar  
produced by **Ha-Be Betonchemie GmbH & Co. KG**  
Stüvestraße 39  
31785 Hameln

and produced in the factory **Werk Hameln**

This certificate attests that all provisions concerning the assessment and verification of constant performance described in Annex ZA of the standard(s)  
**EN 934-2:2009+A1:2012**

In conjunction with EN 934-6:2001+A1:2005 were applied and that the factory production control fulfills all the prescribed requirements set out above.

This certificate was first issued on 15 January 2003 and will remain valid as long as the test methods and/or factory production control requirements included in the harmonized standard, used to assess the performance of the declared characteristics, do not change, and the product, and the manufacturing conditions in the plant are not modified significantly.

*[Signature]*  
Dr. Hans-Joachim Emswiler  
Head of Quality Dept.

Frankfurt/Main, 7 December 2015

Qualitätsorganisation Deutsche Bauchemie e.V.  
Matten Landstraße 65-6029 Frankfurt am Main  
Tel. +49 69 2046-1170 - Fax +49 69 2046-1139  
www.qdb.de

Aktionsrat und unabhängige Prüfstelle (Beratungs- und Zertifizierungsinstitut) in Frankfurt am Main  
Einkaufsweg: Am Alten Markt 10  
Zertifizierungsinstitut  
gültig bis Ende März 2016 - 15046

**DAKS**  
Technische  
Zertifizierungsstelle  
D-61234 Heppenheim

**KOMO**  
Bevoegdheid in:  
Kwaliteitsysteem  
product  
Periodieke controle

- Plasticizer
- Superplasticizer
- Stabilisier
- Air entraining admixtures
- Accelerators
- Retarder
- Water resisting admixtures
- Viscosity modifier



## 2.2 Concrete Colours

### OUR CONCRETE COLOURS

- Slurries (liquid colours) & pigments
- Certified acc. to DIN EN 12878 Category B
- Suitable for reinforced concrete

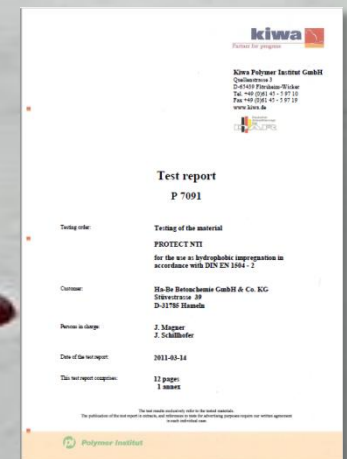




## 2.3 Surface Protection Systems

### OUR SURFACE PROTECTING PRODUCTS

- Hydrophobic admixtures
- Water resistant admixtures
- Impregnations & Coating systems
- UV- curing coating systems
- Spraying technology BM- Anlagenbau



## 2.4 Fibres

### OUR FIBRES

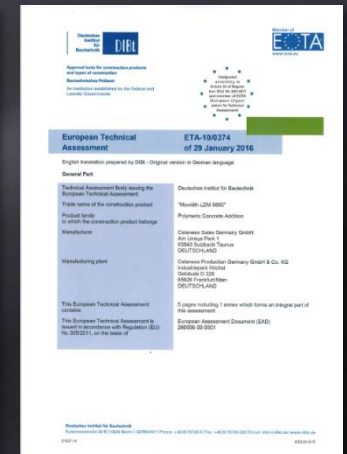
- Polypropylene fibres
- Micro fibres
- Macro fibres
- General construction supervisory approval



# 2.5 Additives

## OUR ADDITIVES

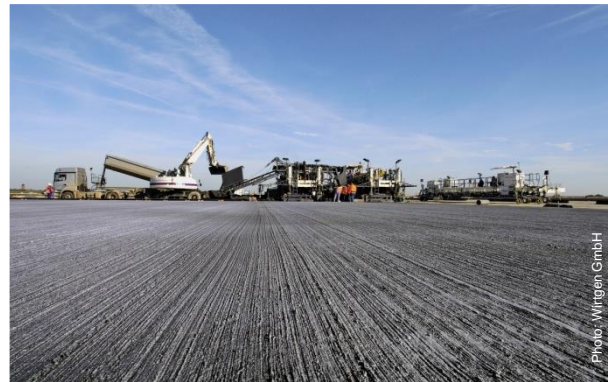
- Microsilica in powder and liquid form
- Mowilith® / Celvolit® LDM 6880
- European & general construction supervisory approval



### 3. Projects & References



## 3.1 Concrete Traffic Areas



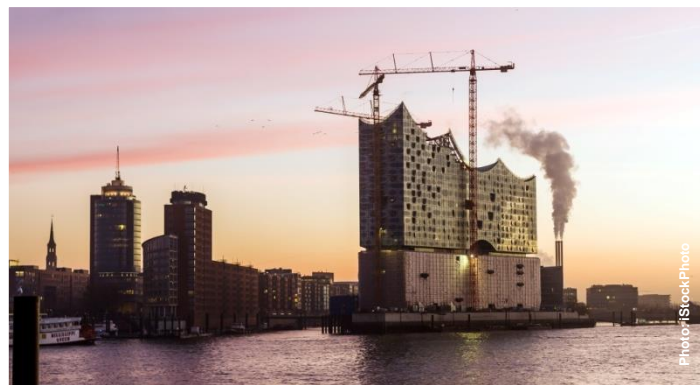
### AIRPORTS

- Airport Hamburg, DE
- Airport Dusseldorf, DE
- Airport Stuttgart, DE
- Airport Zagreb, HRV
- Airport Riga, LET
- Airport Berlin/Brandenburg, DE
- Airport Frankfurt, DE

### MOTORWAYS

- A7 Hamburg – Bordesholm, DE
- Suez-Cairo Service Road, EGY
- A2 Brandenburg a.d. Havel, DE
- S8 Lask, PL
- A14 Ludwigslust, DE
- A12 / AD Spreeau, DE
- A5 Weinheim, DE

## 3.2 Engineering Constructions



### BRIDGES

- Business Bay Crossing, Dubai, VAE
- Saale-Elster Bridge, Halle, DE
- Saadiyat Island Bridge, Abu Dhabi, VAE

### BUILDING CONSTRUCTIONS

- European Central Bank, Frankfurt, DE
- ADNOC Headquarter, Abu Dhabi, VAE
- Elbphilharmonie, Hamburg, DE
- Terminal Flughafen Abu Dhabi, VAE

### WATER LOCKS

- Lock Dörverden, Dörverden, DE
- Lock Münster, Münster, DE
- Lock Fankel, Fankel, DE

## 3.3 Tunnel Constructions



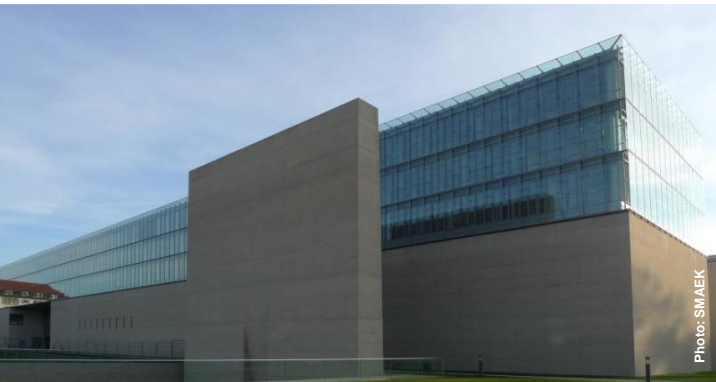
### SEGMENTAL LININGS

- Dubai Metro Expo 2020, UAE
- Ismailia Road / Railway Tunnels, EGY
- CityRing, Copenhagen, DNK
- Golden Line Metro, Doha, QA
- Emscher Sewage System, Ruhr area, DE (Pipe Jacking)

### SHOTCRETE METHODS

- Crossrail, Lot C510, London, GB
- Schwarzkopftunnel, Heidenbrücken, DE
- Stuttgart 21 Low Level Station & Lot 3, Stuttgart, DE
- Tunnel Küchen, Hess. Lichtenau, DE
- Bibra- Tunnel, Bad Bibra, DE

## 3.4 Architectural Constructions



### COLOURED- & EXPOSED CONCRETE SURFACES

- Bollywood Parks™ Dubai, UAE
- Eleftheria Square, Nicosia, CYP
- Munich Documentation Centre for the History of National Socialism, Munich, DE
- State Museum of Egyptian Art, Munich, DE
- Museum for Architectural Drawing (Tchoban Foundation), Berlin, DE
- Tadao Ando's Stone Sculpture Museum, Bad Münster am Stein, DE
- Skatepark X-Dubai, Dubai, UAE